



What the CWG Can Expect During the Fall Concept Design Submission Feedback Period

Overview

- The Project includes full design and construction services for a new middle school on Euclid St, which will be an approximately 141,000 square foot renovation of the existing "Old Banneker" building.
- This modernization project will ***retain the existing historic building*** structure while enhancing the value of the courtyards. The scope will involve strategic placement of spaces required by the site-specific Education Specifications (Ed Specs), an upgrade of required finishes and building systems to align with both Ed Spec and NetZero goals.
- The CWG can expect the design build team to present three distinct concepts for the building. The engagement will include two key meetings: the first will focus on presenting the proposed concepts, and the second will be dedicated to gathering feedback from the CWG. The dates of the meetings will be provided by early July.

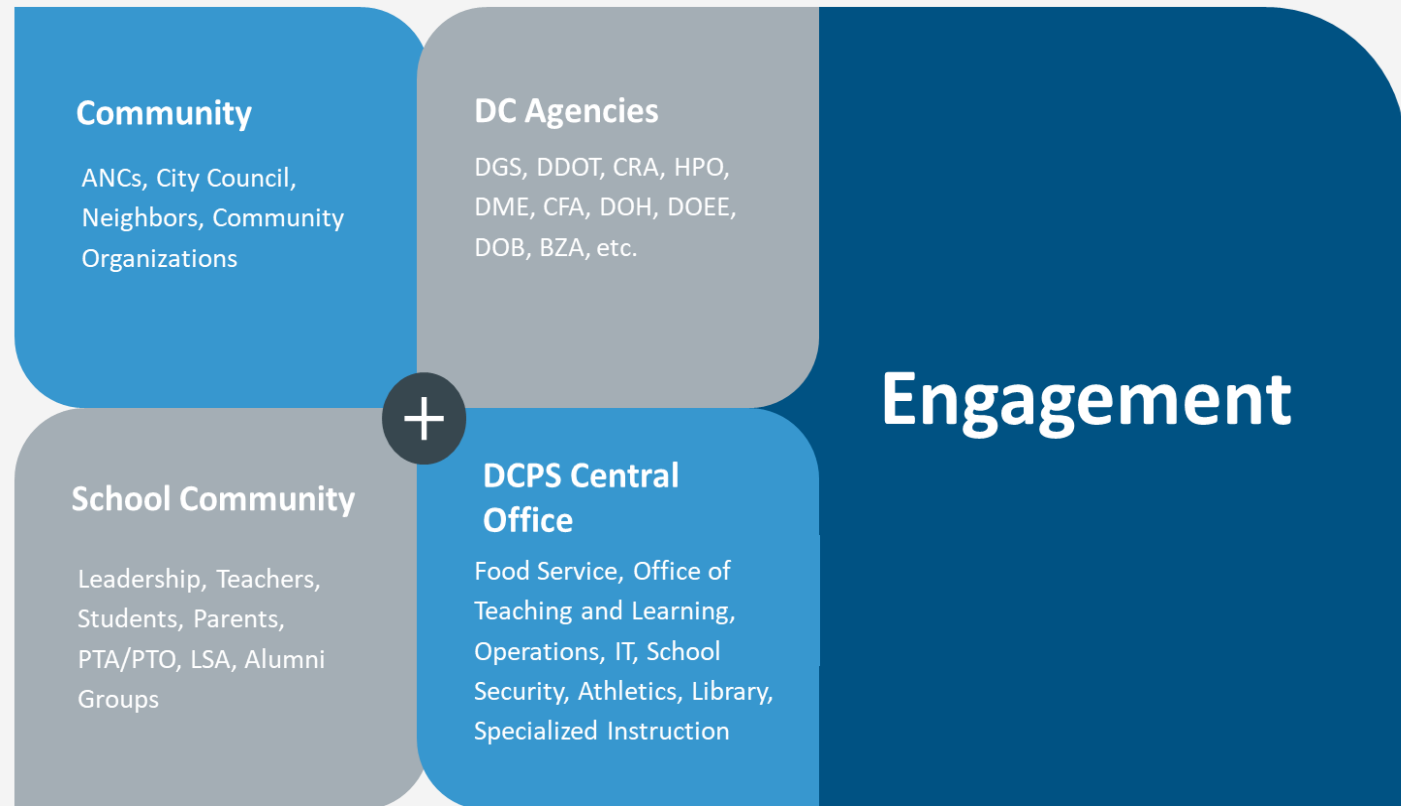
What type of feedback can the CWG expect to provide in the fall for concepts ?

- There are many aspects of the design where your feedback will make a meaningful impact—including the courtyard, student dining areas, outdoor classroom and dining spaces, the overall interior experience, and how the school functions day to day. We're especially interested in your thoughts on programmatic spaces, specials adjacencies, and how the design can best support students and staff.
- There are a few areas where decisions have already been made or are limited by scope, structural constraints, or the approved educational program. These include the total square footage of the building, the existing footprint of the building along with key areas, and the number of classrooms, which are based on the Educational Specifications (Ed Spec).

What is concept design ?

- The CWG will be presented with 3 different concepts in the fall. Due to the historic building structure, the CWG will see similarities between the 3 concepts.
- The concept design phase is the first step in this design process. Its main goal is to confirm the overall scope of the project and ensure the program of spaces and their desired relationships are clearly defined. Once those requirements are established, the Design Team begins to explore high-level ideas for the layout of the building. This early work focuses on big-picture elements like how the building connects with the site, its overall scale, and how major components of the school relate to one another. For example, the architect may explore general placement of key spaces—like student dining or performing arts—but will not yet develop specific design details within those areas.
- The CWG's feedback ***will help INFORM*** DCPS Facilities and planning decision on concept selection.

Key Stakeholders



HOW CAN THE CWG HELP ENVISION A NEW EUCLID MS?

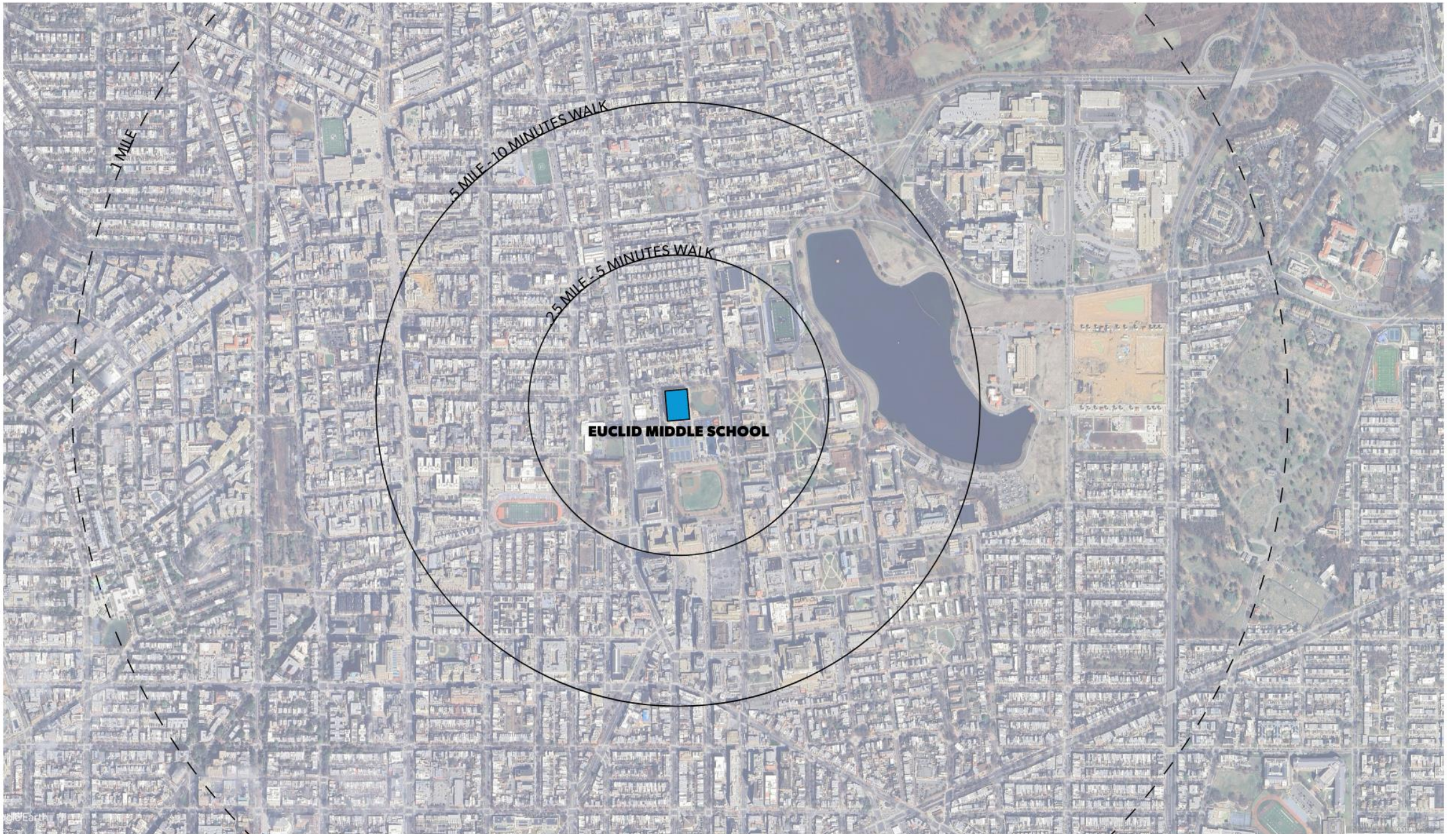
- ACADEMIC VISION
- CULTURAL VALUES
- ITERATIVE DESIGN FEEDBACK

PROJECT SCOPE

- FULL MODERNIZATION
- ALL NEW BUILDING SYSTEMS - MECHANICAL, ELECTRICAL, PLUMBING
- NEW FIXTURES, FURNITURE AND FINISHES
- MAINTAIN HISTORIC ELEMENTS OF THE BUILDING
- PROGRAM PER THE EDUCATION SPECIFICATIONS
- NETZERO ENERGY, LEED GOLD FOR SCHOOLS
- PERCENT FOR ART - PUBLIC ART

EDUCATION SPECIFICATION - HIGHLIGHTS

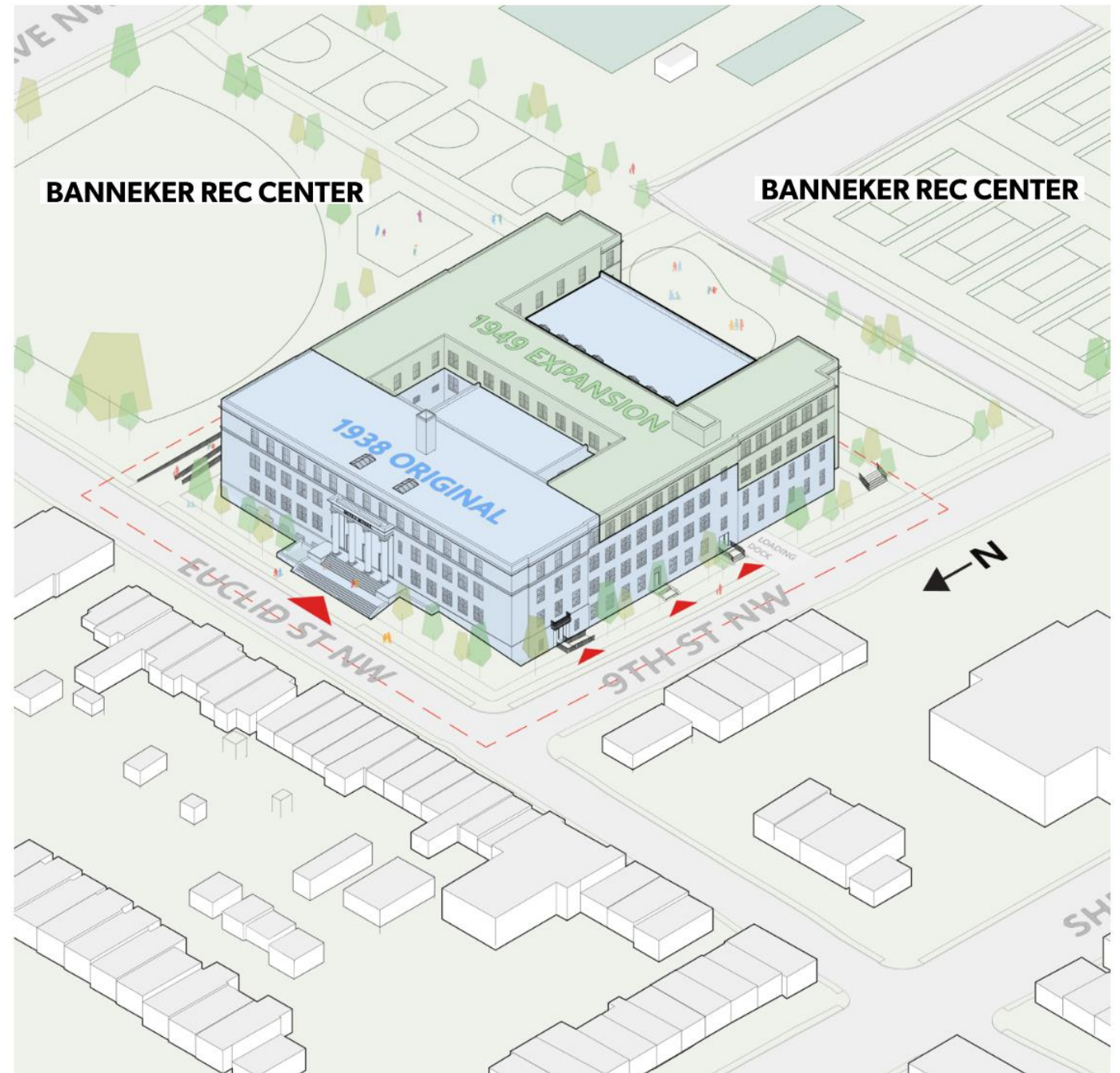
- GYMNASIUM, LOCKER ROOMS, & HEALTH CLASSROOMS
- AUDITORIUM
- STUDENT DINING
- LIBRARY SPACES
- 6TH - 8TH GRADE CLASSROOMS
- SELF CONTAINED CLASSROOMS
- ART LABS & MUSIC ROOMS
- TECHNOLOGY LABS

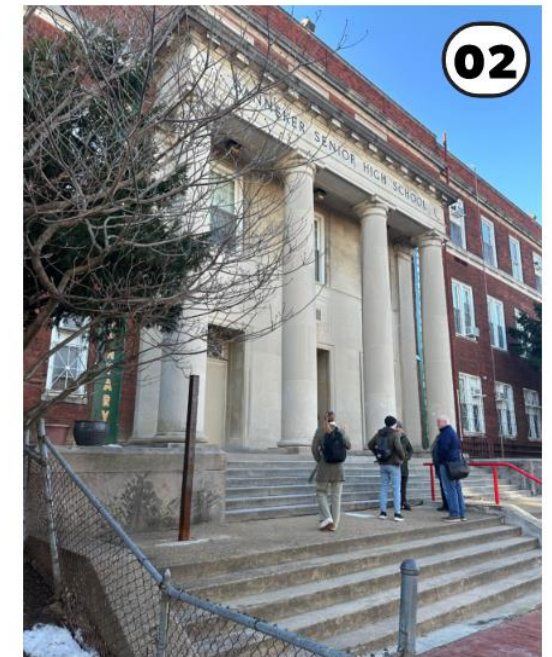
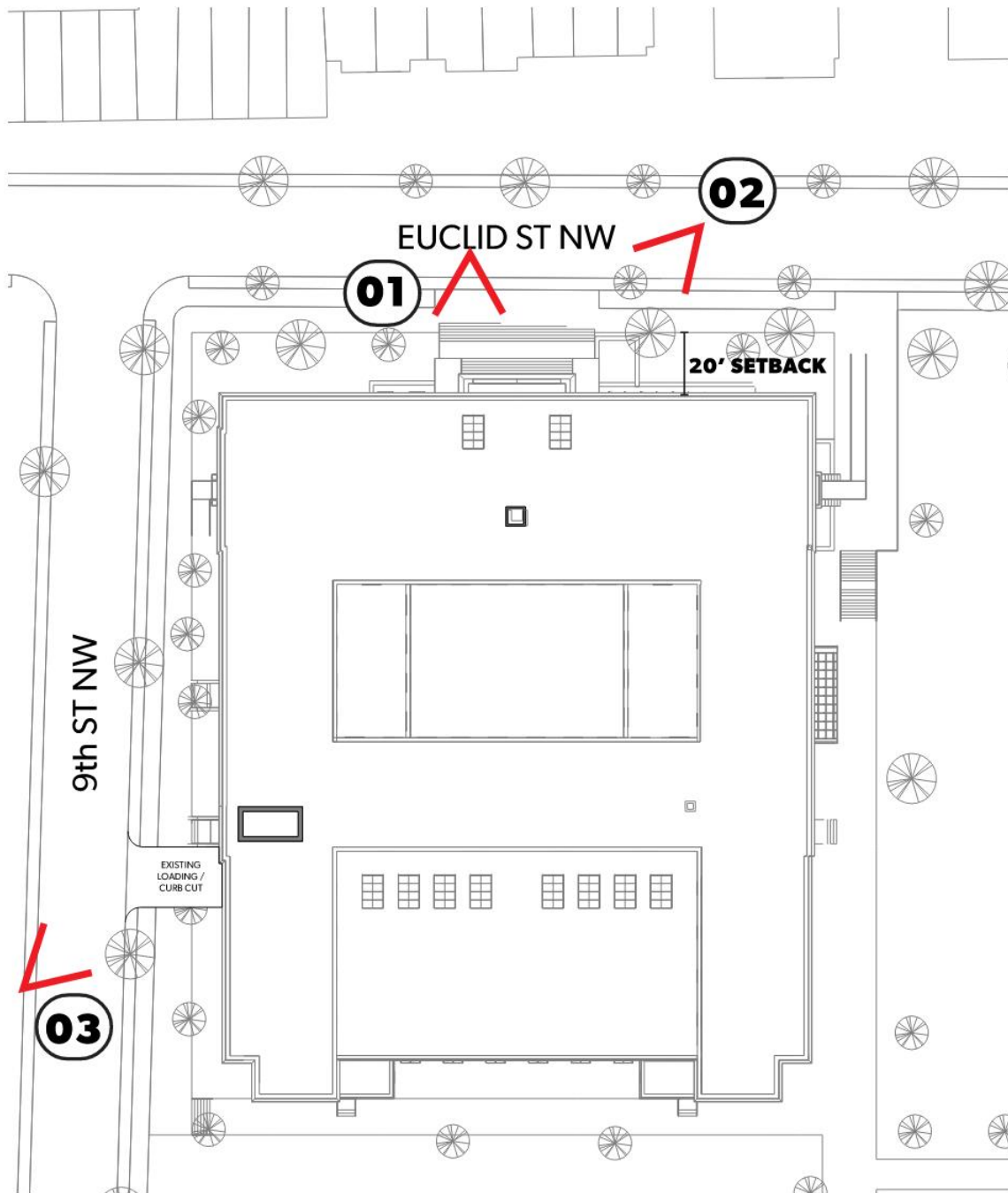


EXISTING BUILDING

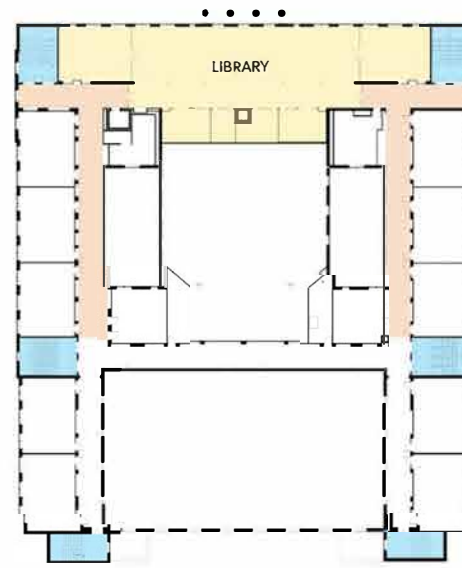
- BUILT IN 2 PHASES, 1938 & 1949
- DESIGNED BY MUNICIPAL ARCHITECT NATHAN WYETH
- 141,000 SF
- CURRENTLY IN USE AS A SWING SPACE FOR TUBMAN ELEMENTARY
- EXISTING HISTORIC AUDITORIUM AND GYMNASIUM
- LAND-LOCKED BY STREET AND REC CENTER

PROJECT LIMITS - - -
SIDE ENTRANCE ▲
MAIN ENTRANCE ▲

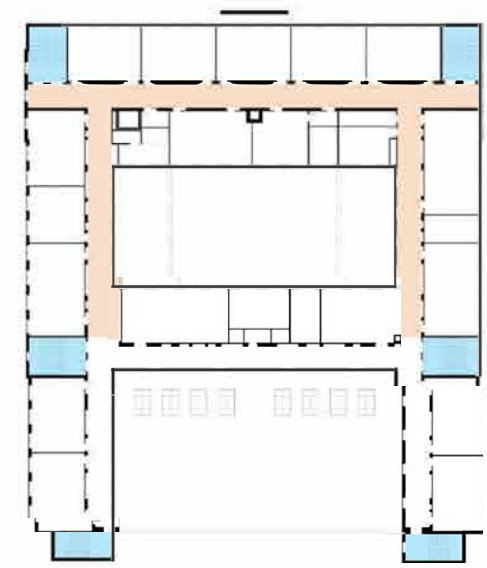




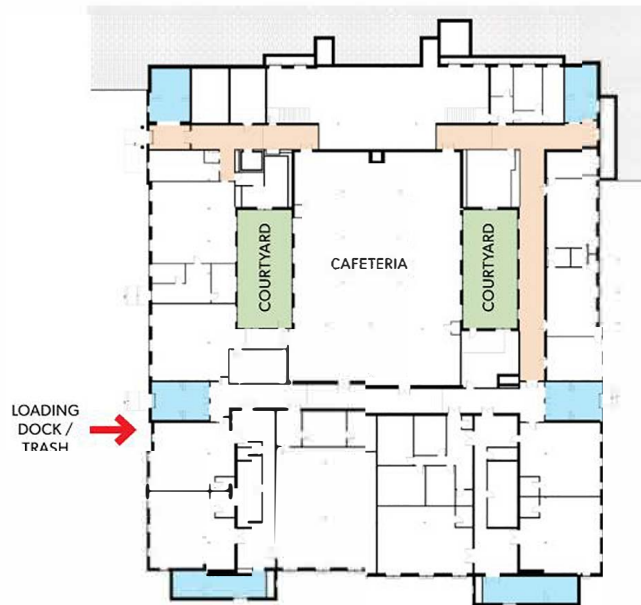
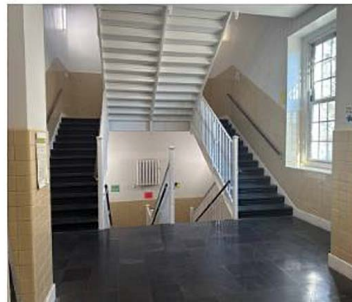
-  COURTYARDS
-  TERRAZZO
-  STAIRWELLS
-  SPACES TO REMAIN
-  LIBRARY



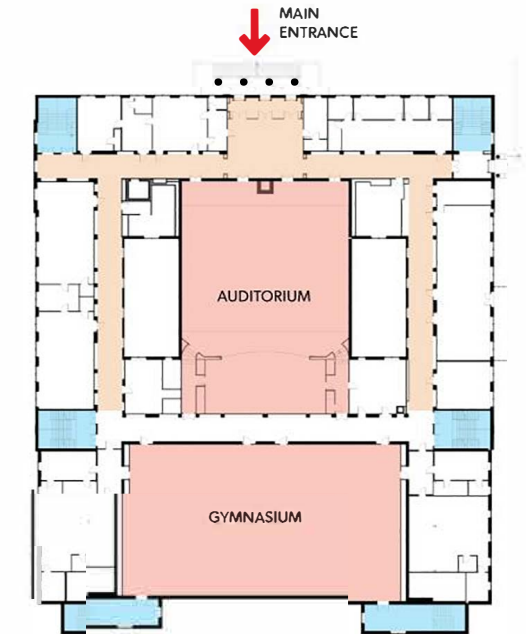
LEVEL 2



LEVEL 3



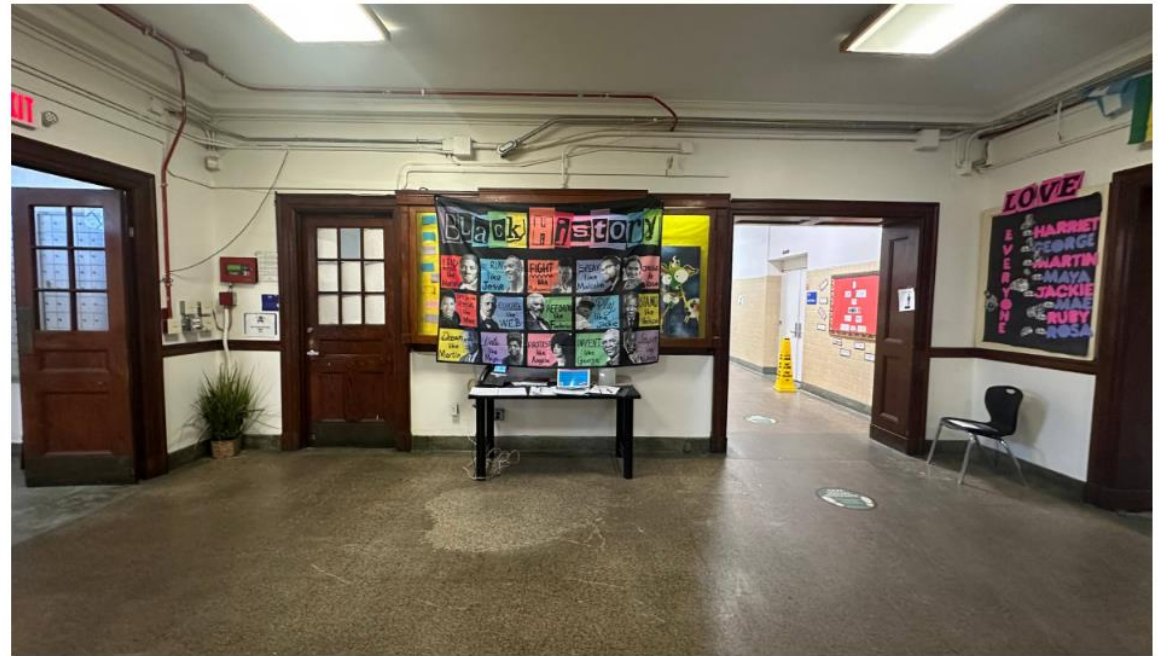
BASEMENT



LEVEL 1



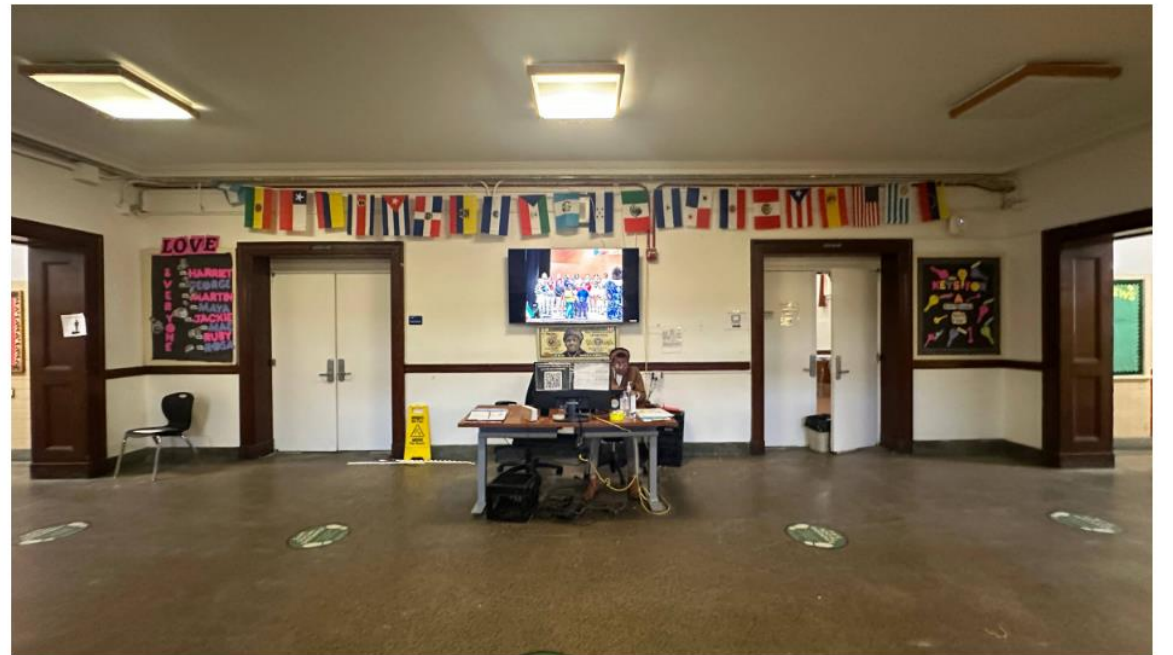
1.



2.



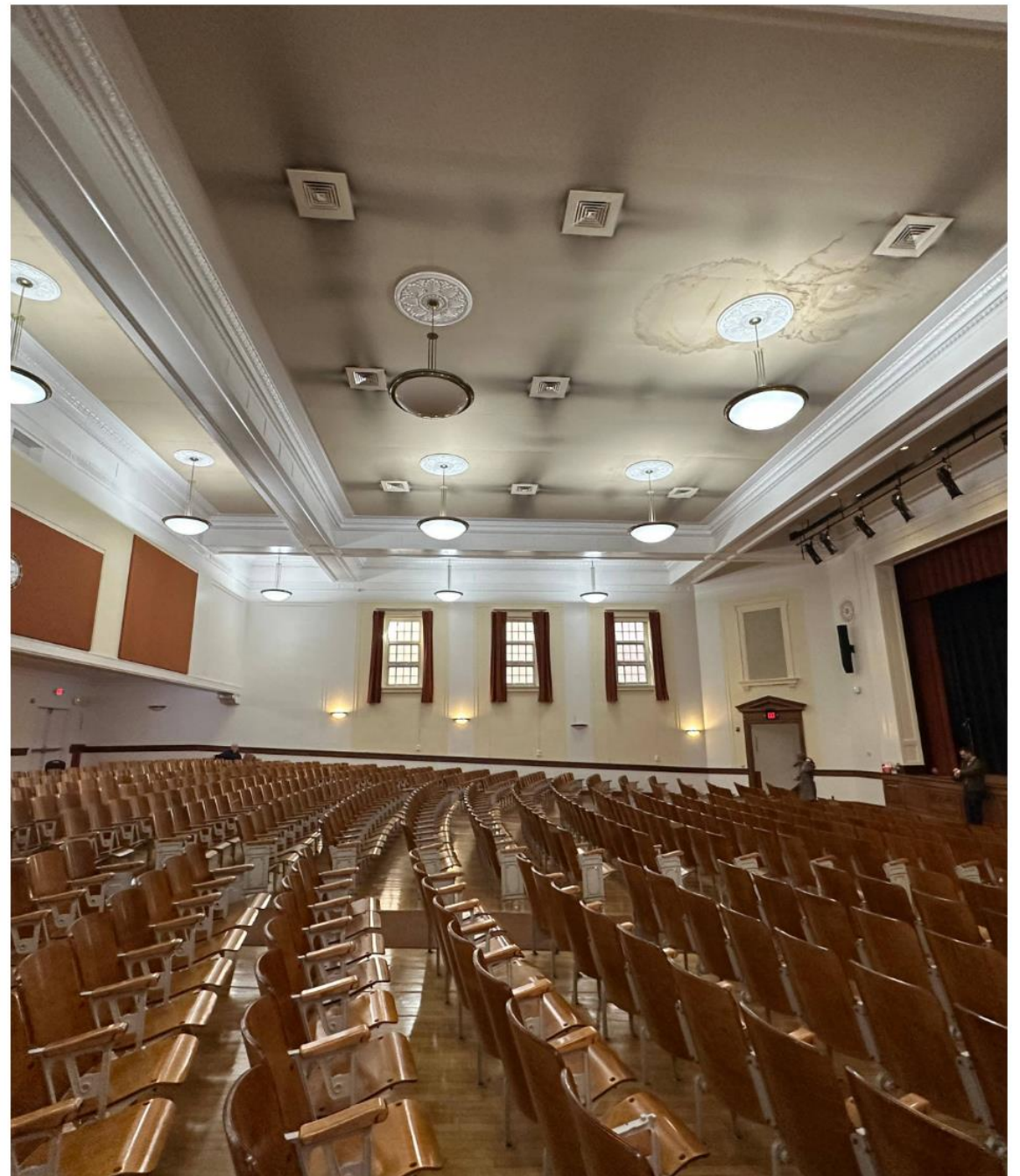
3.



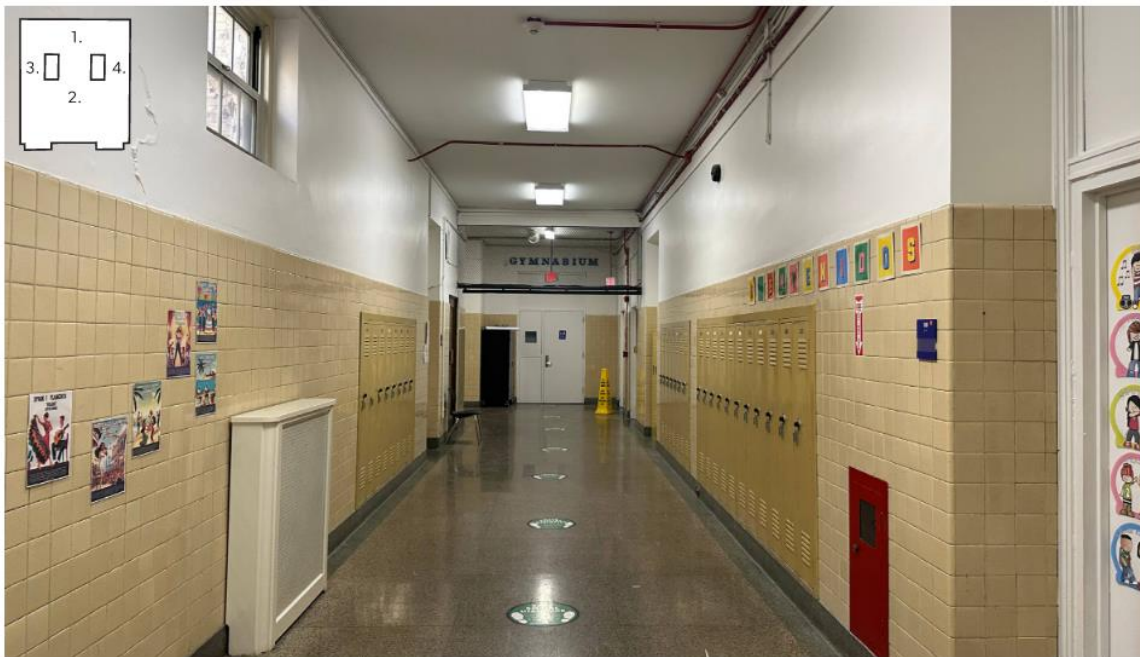
4.



1.



2.



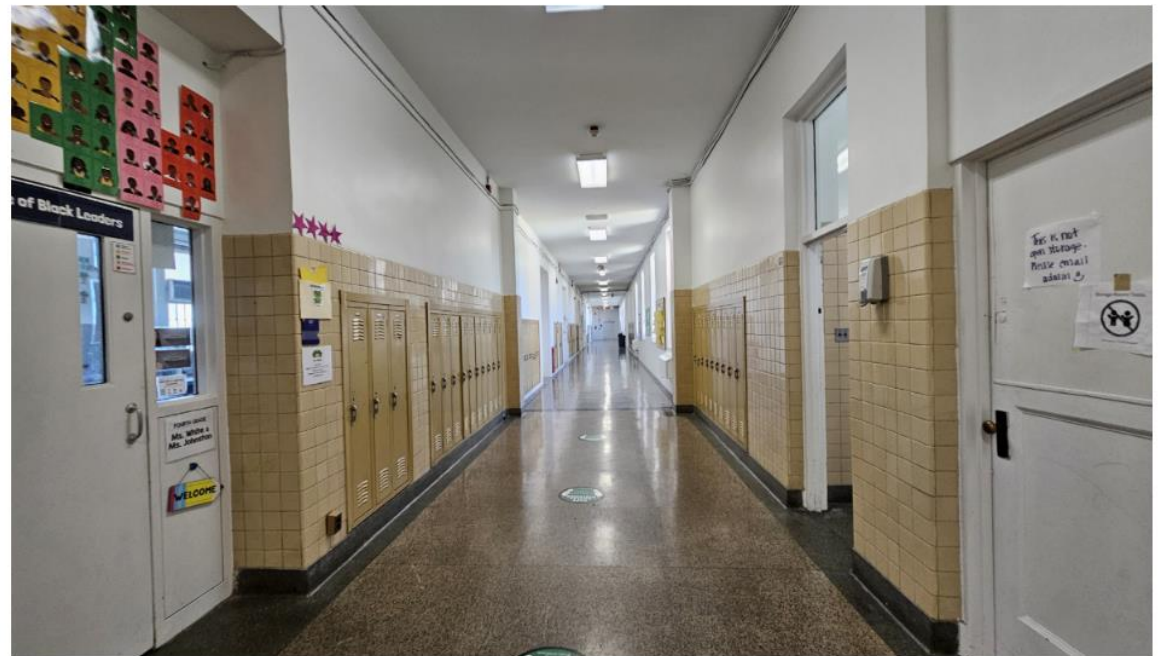
1.



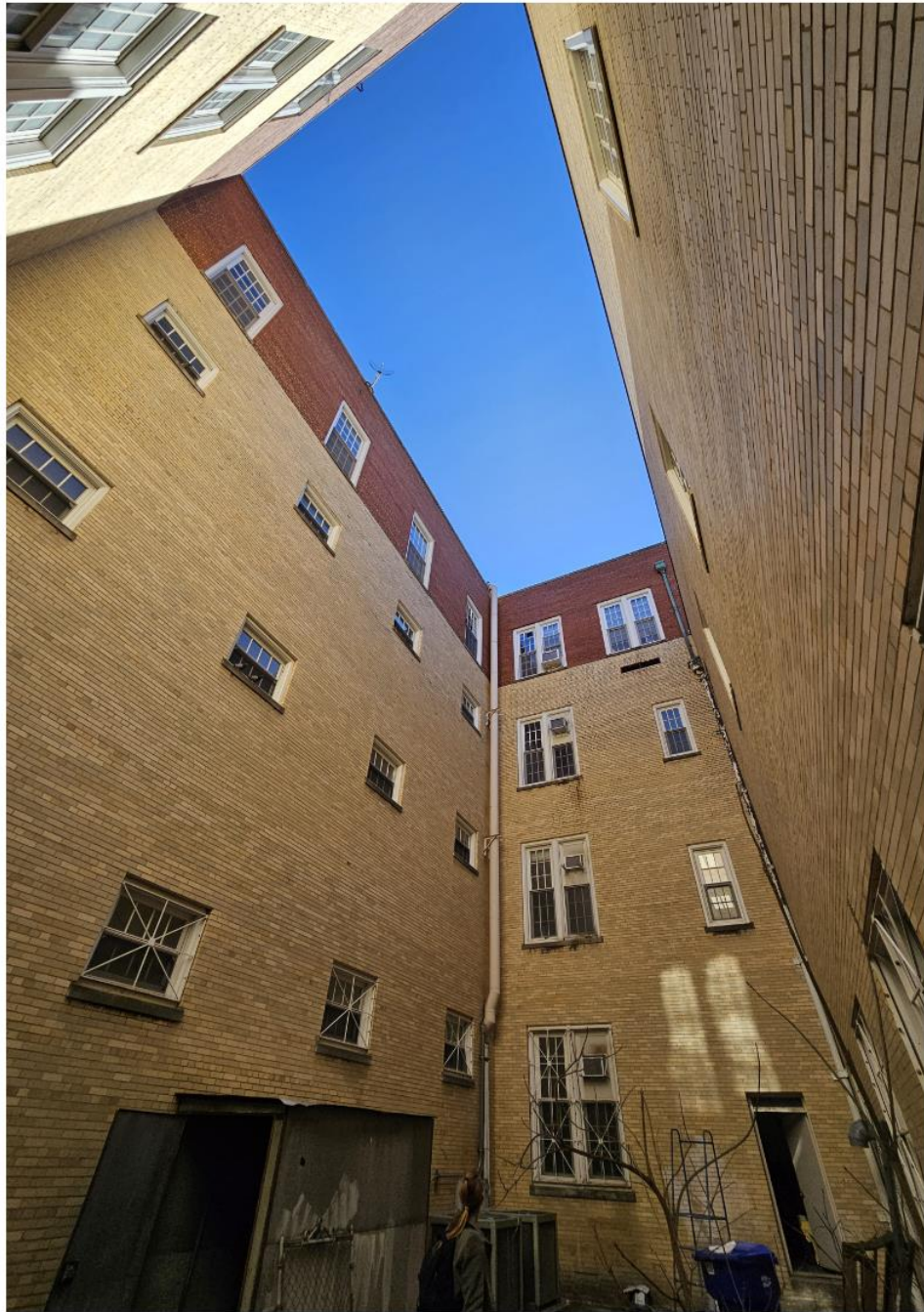
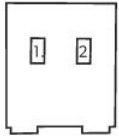
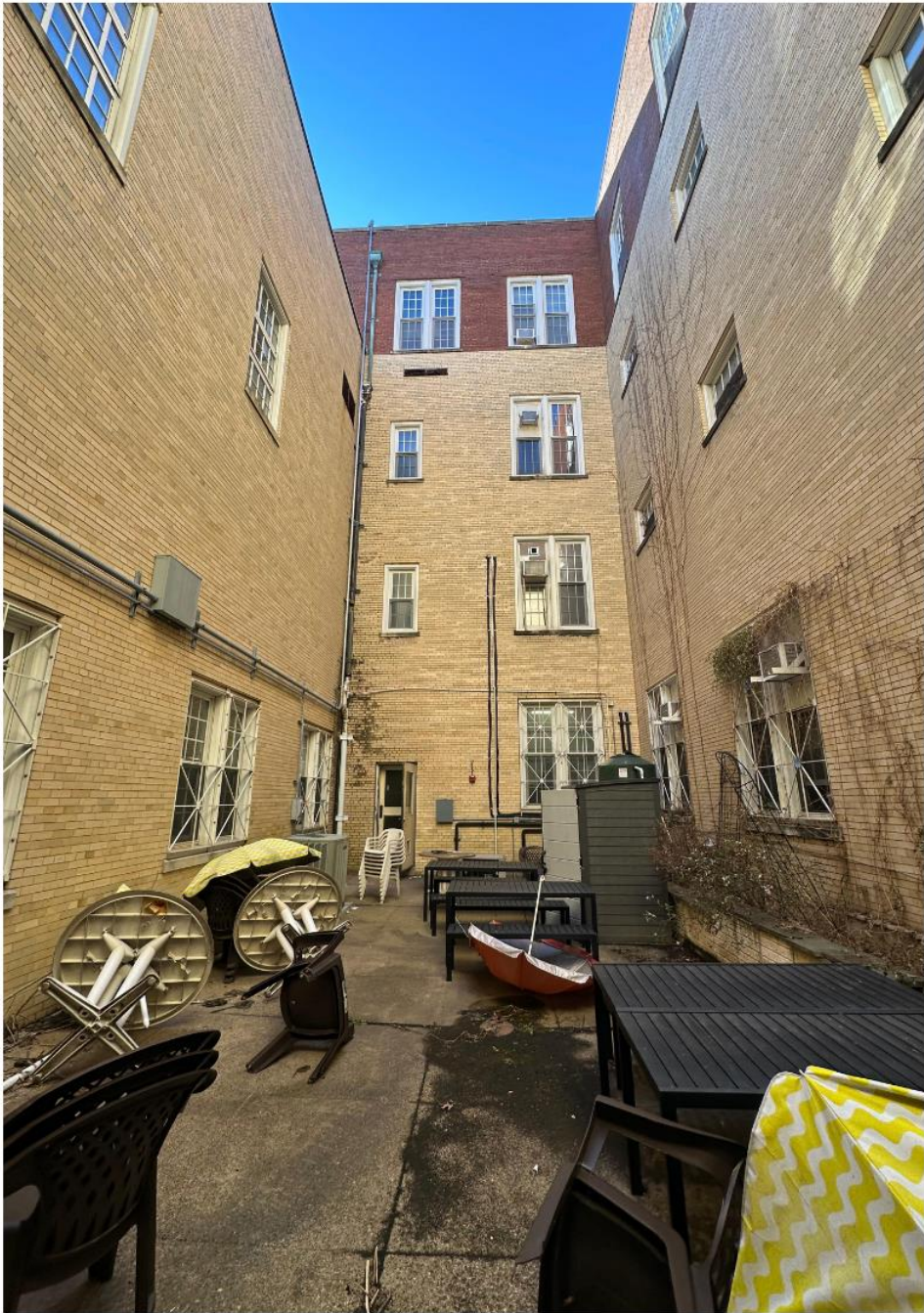
2.

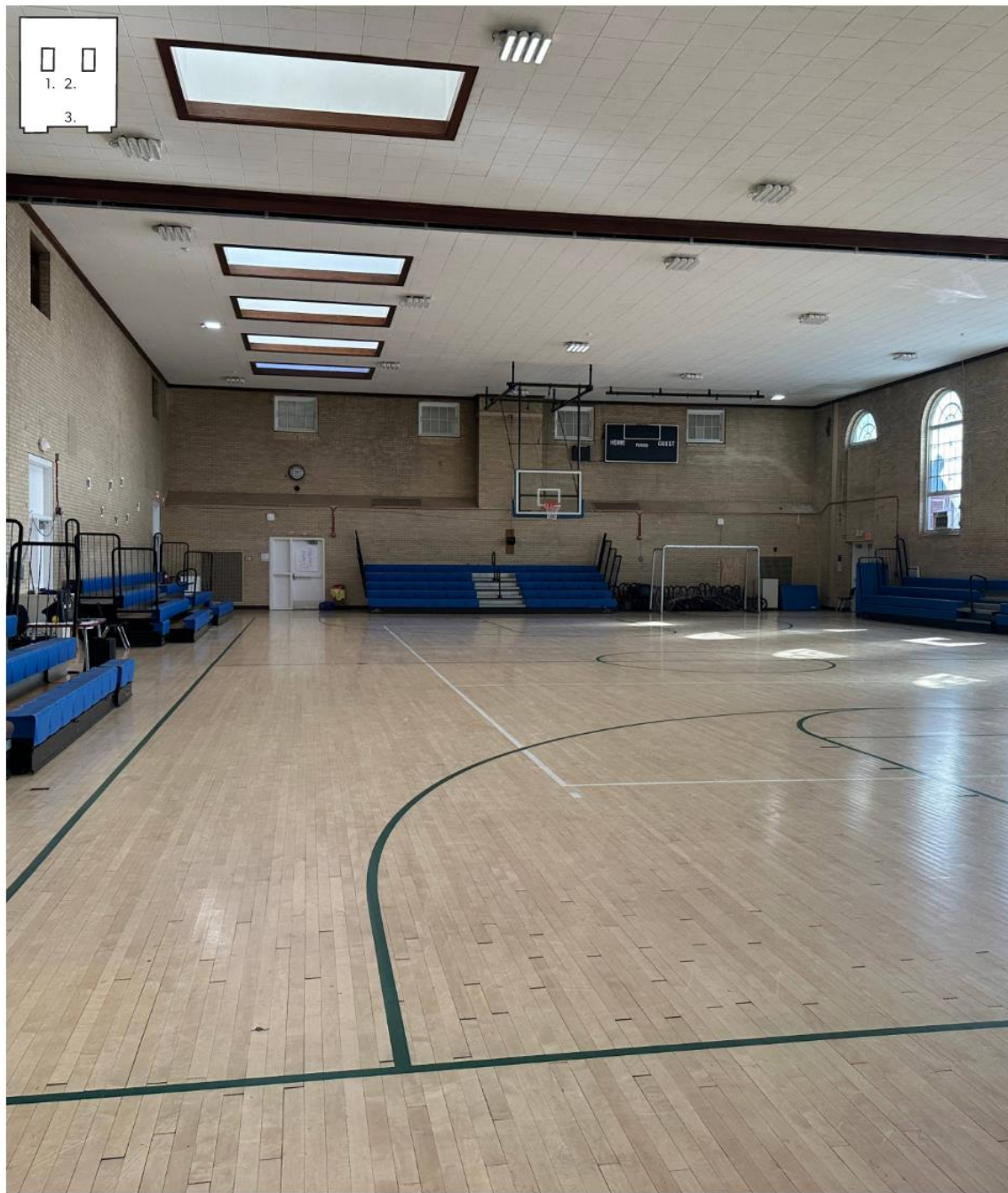


3.

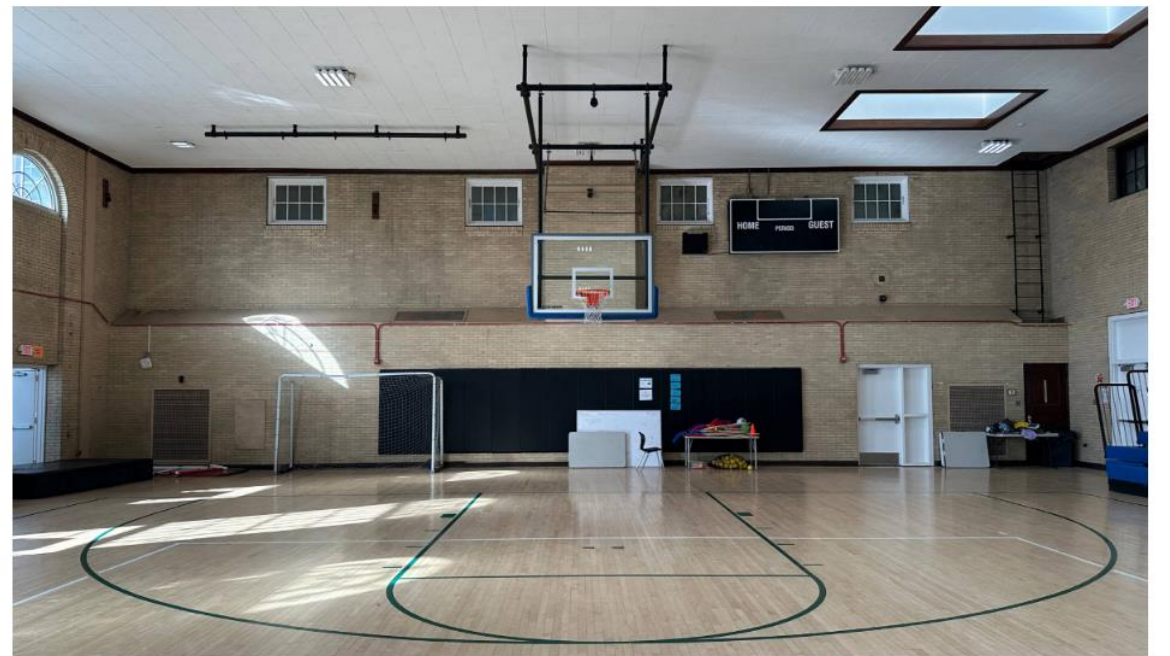


4.

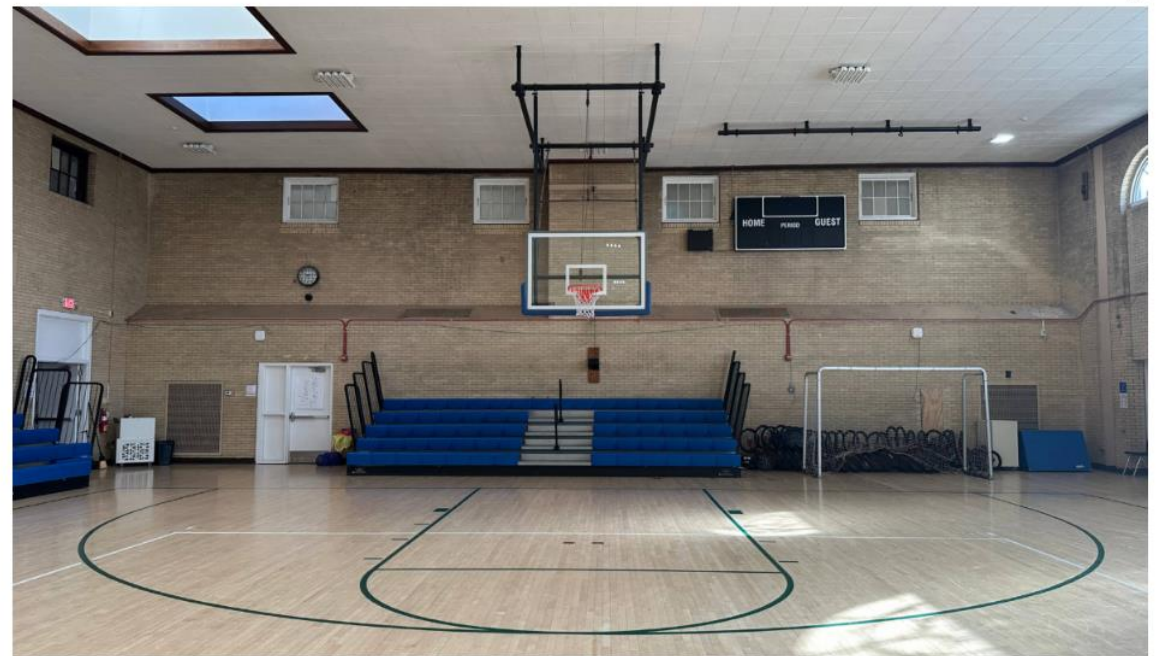




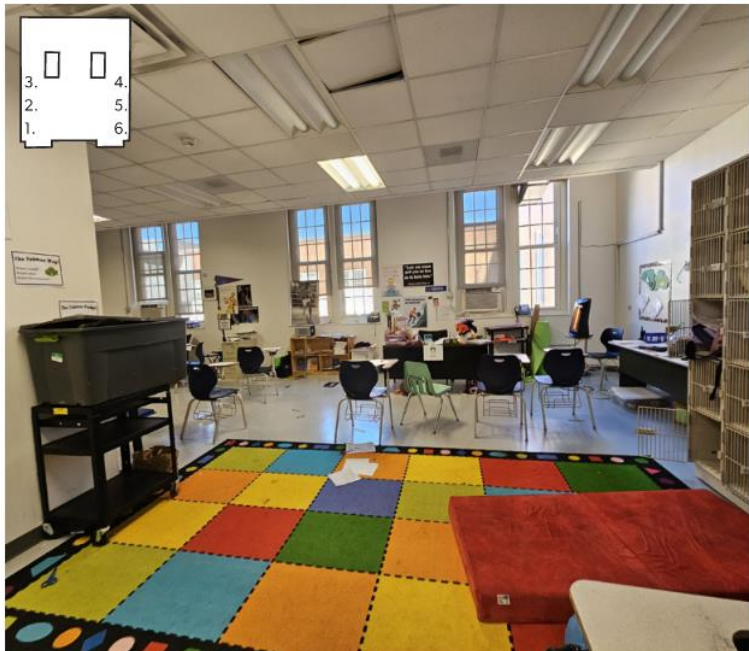
1.



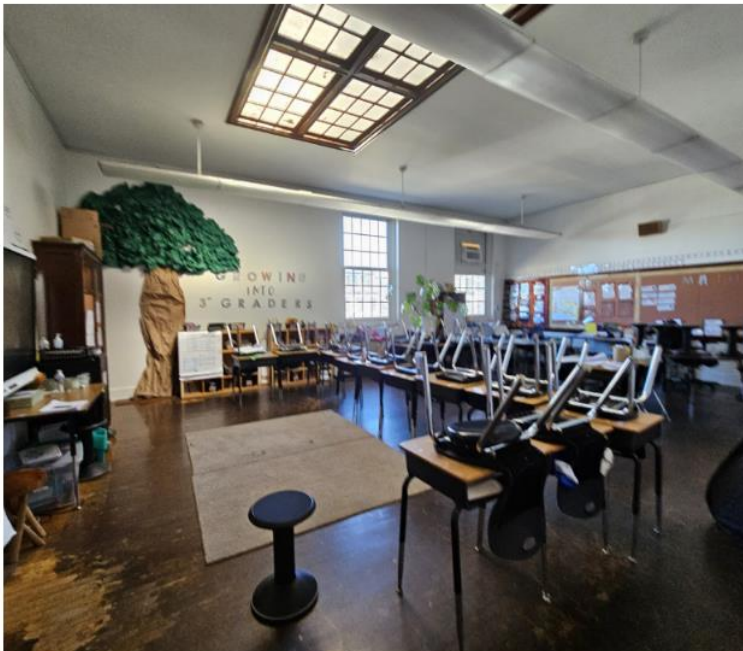
2.



3.



1.



2.



3.



4.



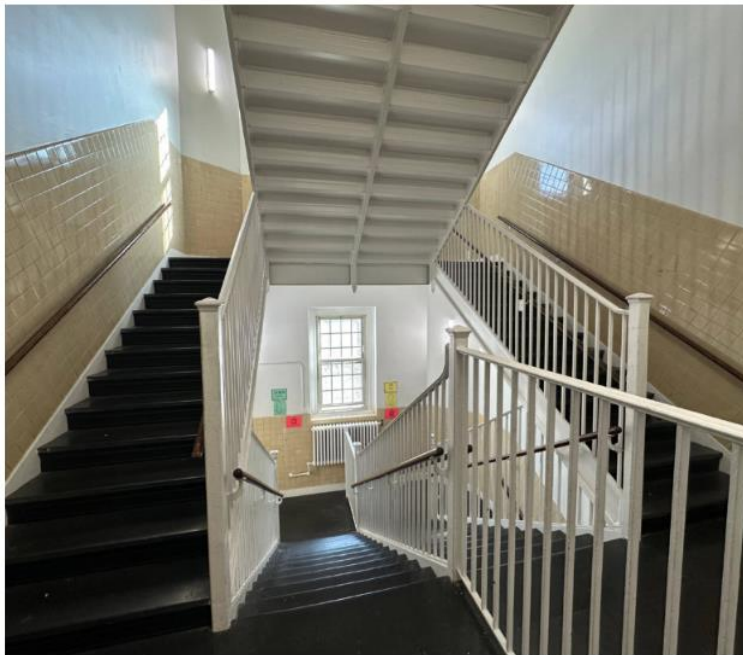
5.



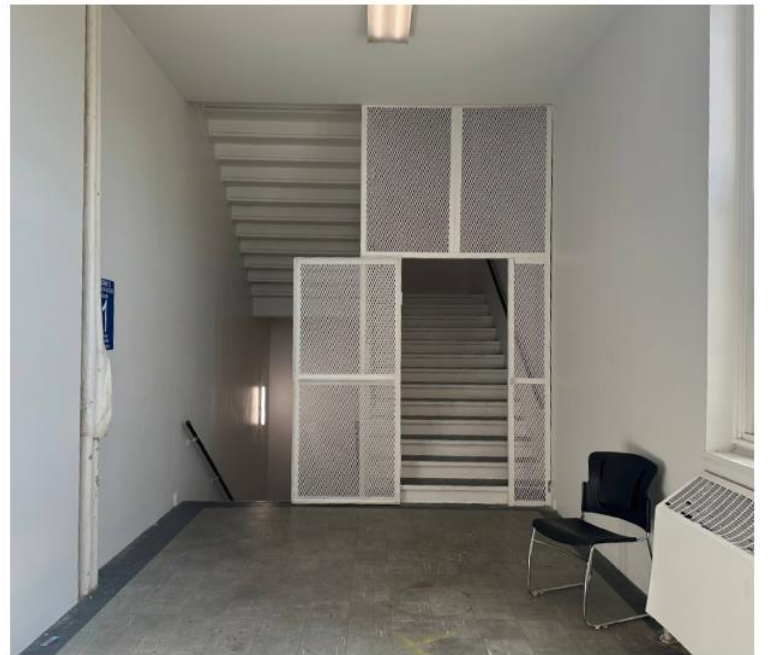
6.



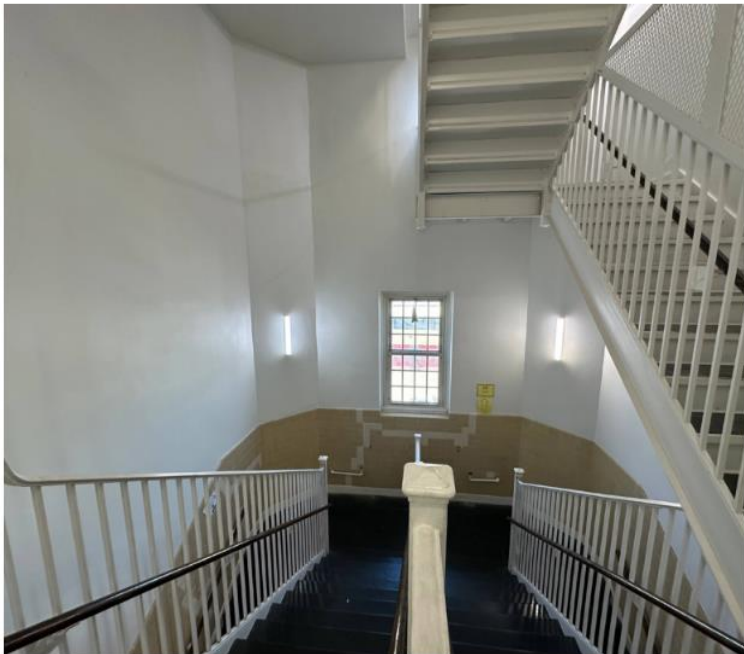
1.



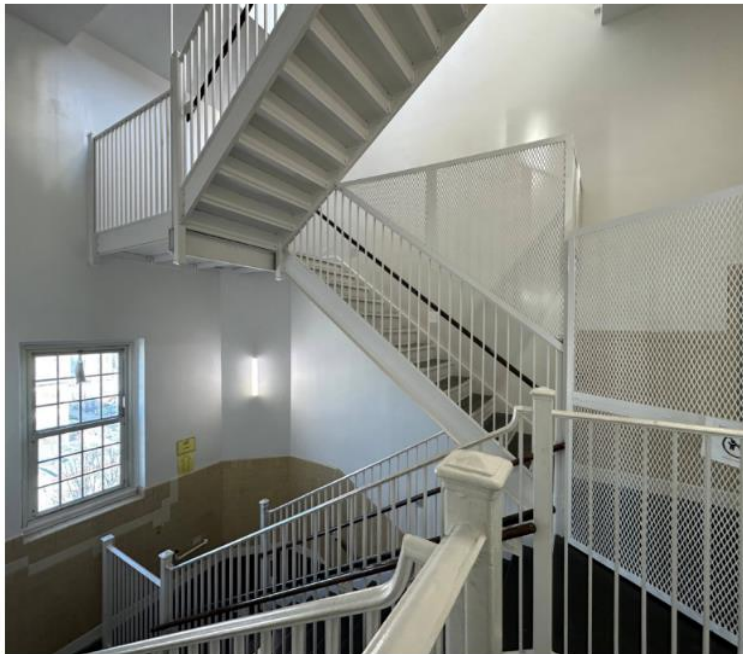
2.



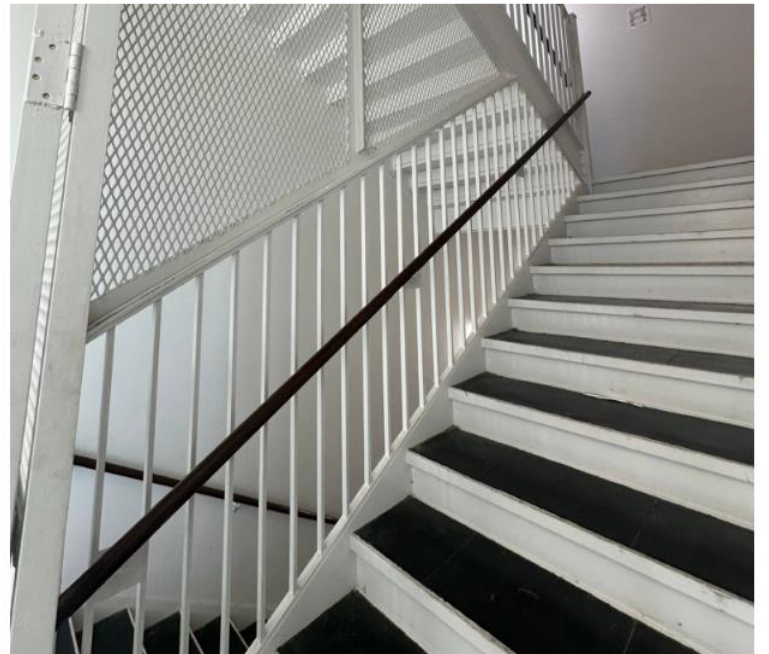
3.



4.



5.



6.



1.



2.



3.

What do you hope the new middle school on Euclid St. students are known for, both in school and in the community?

What do you think are the biggest challenges the school will face?

What are your hopes for the
modernized building?

During your school visits, what stood out to you—in both positive and not-so-positive ways?